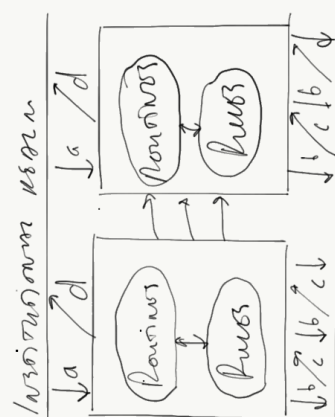


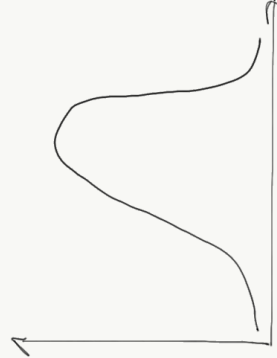
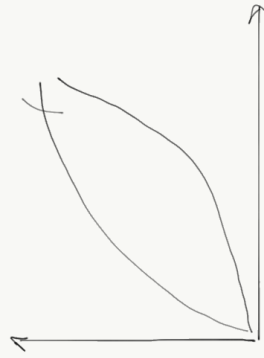
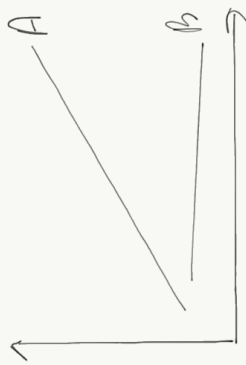
Kausalmodelle

1. $A \rightarrow X$
 $B \rightarrow X$
2. $A \rightarrow X$
 $B \rightarrow X$
3. $A \rightarrow B \rightarrow X$
4. $A \rightarrow X$
 $B \rightarrow X$
5. $A_{in} \rightarrow B_{in}$
 $A_{in} \rightarrow B_{out}$
6. $A \leftrightarrow B$

DATA-DEPENDENT MODEL



Typ AU RELATIONEN



ANALYSIERER

BEYOND ORG./INST
ORGANIZATION
SUB-UNIT/GROUP
INDIVIDUAL

INST.



A = SINGLE LEVEL MODEL
B = MULTIPLE LEVEL MODEL

BEGRIPP, VARIABLE, CONCEPT

- DEFINITION
- BEWERTUNG
- ANWENDUNG
- OPERATIONALISIERUNG

ANDERE TYPEN AN MODELLE

- MATHEMATISCHES MODELLE
- SIMULATION MODEL
- GRENZEN/EINWIRKUNG
MODEL
- BR.

CHARAKTERISTISCHES

- FOLGESCHREITEN
- ORGANISATIONSSYSTEM